

 THE CHURCH
OF ENGLAND
Diocese of Chester



St Peter's Elworth Church Magazine

November 2011

WELCOME



Welcome to the November edition of **SPEAK** magazine.

It's very scary when, in September, people start talking about Christmas. You dismiss it thinking it months off, then suddenly people are talking about how many weeks it is, and then even more suddenly, it's days!

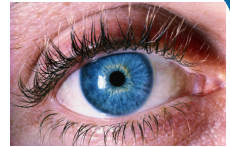
As we near the end of the year and the start of the new format of the magazine in the new year exciting times lie ahead. So thank you to all those who have supported us in the current format, whether that be through advertising or providing copy, or simply enjoying the read. How many days to go...?

Diane Noble
Editor

VISION STATEMENT

We are committed in love to worshipping God:

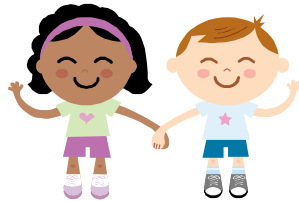
- **By proclaiming the Gospel in word and action**
- **By encouraging growth**
- **By serving others**
- **By leading people into a personal relationship with Jesus**



JUNIOR CHURCH

Junior Church runs concurrently with the 10.30am service at St Peter's and is for 0 to 14 year olds, split into various groups:

- | | |
|---------------------|------------------|
| Lego | (3 to 6 years) |
| Adventurers | (7 to 11 years) |
| Youth Church | (11 to 14 years) |



Unfortunately these activities usually take place in the Church Hall so currently the Crèche is not running and the other groups are meeting in Elworth C of E School instead.

DAVID'S PAGES...



Remembrance and response

The Harvest celebrations are complete, and the dark evenings of November are rushing in. However, one of the major Biblical themes of Harvest, remembrance, is at the heart of the activities of November, with Bonfire Night, Remembrance Sunday and All Souls' Day (mis-celebrated by many as Halloween) and All Saints' Day all occurring in November.

The Old Testament people were encouraged in their Harvest celebrations (The Feast of Tabernacles) not just to remember the goodness of God in the Harvest, but also their delivery out of slavery in Egypt. In the New Testament, the early church didn't just thank God for the bread on their tables, but also for the bread of eternal life; Jesus.

However, God didn't call his people just to get stuck in the past. Yes, he called them to remember, but also to respond. The Feast of Tabernacles was completed by a day of thanksgiving offerings to God (Leviticus 23:33-43). In the New Testament, the early church was not just told to remember what Jesus did, but to actively respond and tell others of his love, action, death, resurrection and gift of eternal life.

This year, as we come to Remembrance Sunday, let us remember not to just go back, but to remember to respond to God's challenge for us to do His will in the world today. What should that response be? The prophet Micah and the gospel writer Matthew record God's challenge to us in two complementary ways.

"He (God) has showed you, O man, what is good. And what does the Lord require of you? To act justly and to love mercy and to walk humbly with your God."

Micah 6:8

"Therefore go and make disciples of all nations, baptising them in the name of the Father and of the Son and of the Holy Spirit, and teaching them to obey everything I have commanded you. And surely I am with you always, to the very end of the age."

Matthew 28: 19-20

These two verses give us the same message. Remember and respond by loving God and your neighbour as yourself.

David Page

TEMPEST PHOTOGRAPHERS



We have arranged for
Tempest Photographers to be at

Newark House on
Saturday 5th November
from **9.00am** to **12.00noon**

where there will be an opportunity for individual,
family or group photographs to be taken

If you would like to arrange for a preferred time or for further
information contact the **Church Office** on **762213**
or **Michelle Walker** on **767726**



Morning coffee and Fairtrade goods will also be available to purchase



COME AND MEET EACH OTHER 'CAMEO'

Ladies, 'Come And Meet Each Other' and
have a chat over a cup of tea or coffee on

Thursday 3rd November
Thursday 8th December
between **2.00pm** and **4.00pm**

For more information and details of where we are meeting please contact
the **Church Office** on **762213**

THE CHURCH MAGAZINE

How to continue to receive this magazine in 2012

Following consultation within the church family we are planning some changes...

There will be a new full colour quarterly publication, which we hope to deliver to everyone who currently receives the magazine plus some new households as well.

We will also continue to distribute this magazine (**SPEAK**) to everyone who wishes to receive a copy. If you are able to come to one of our services then it will still be available at the back of church. Alternatively, if you let us know who you are then we can continue to deliver it to you.

A number of people have asked recently about receiving electronic copies of **SPEAK**. Due to printing and folding time this also enables you to see each edition sooner. If you send us your e-mail address we would be happy to send you each magazine as an attachment when they are published. It is also now available at:

<http://www.stpeters-elworth.org.uk/church.html>

To receive **SPEAK**, please send an e-mail to editor@stpeters-elworth.org.uk or complete the form below. To receive an electronic copy you will need to name the subject of the e-mail 'Subscribe'. To receive a paper copy, you will need to include your address in the body of the e-mail and write 'Address' in the subject heading.

.....
I would like to receive **SPEAK** from 2012 onwards until further notice:

Electronic copy. My e-mail address is:

Paper copy. My postal address is:

Please return to:

Church Office, Newark House, 1 Dalton Court, Elworth, CW11 1YD
or give to a member of the PCC

OPERATION CHRISTMAS CHILD



For the past 21 years, Operation Christmas Child has touched the lives of millions of schoolchildren across the UK - through the simple act of sending a shoebox filled with gifts of love to a child in need. In 2010 1.12 million gift-filled shoeboxes were wrapped and packed by children and adults in the UK and sent to children in parts of the world where Christmas presents are luxuries they cannot afford. Last year we collected 186 shoeboxes which were then distributed to needy children in Crimea.



With the 2012 London Olympics fast approaching, Samaritan's Purse have decided to get into the Olympic spirit as part of this year's Operation Christmas Child campaign. How? Through sports-themed shoeboxes. There are several ways you can give your shoebox an Olympic twist this year...



GIFTS:

You might want to include a tennis ball, skipping rope, baseball hat, small football, inflatable beach ball, stop watch, sweat bands, swim goggles, toy medals or some other sports-related gift that would bring a smile to a child!

BOX:

Decorate your shoebox with Olympic stickers, drawings or even try and get hold of special Olympics wrapping paper (if indeed such a thing exists!)

MESSAGE:

Add a message to your child, stating that the shoebox has come from the home of the next Olympics and that you hope they enjoy the sports items you've included in your box for them to play with.

As well as giving you the chance to do something a bit different with your shoeboxes, this is also your chance to send sporty items out to needy children in our world - children who might otherwise not have the chance to experience the joy of sport for themselves.

Operation Christmas Child is an initiative of Samaritan's Purse and is the world's largest children's Christmas project - devoted to spreading love, joy and smiles to children in parts of the world who really need them. Please could I encourage you to be a part of this Christmas miracle? Find an empty shoebox - decide if your gift is for a boy or a girl - fill your box with gifts (for inspiration you can use the list of suggestions in the leaflet available from myself or from St Peter's Church) - and make a donation of £2.50 per shoebox as this helps Samaritan's Purse to distribute the gifts.

Most importantly bring your shoebox along to the service at **St Peter's Church** on:

10.30am Sunday 6th November

It may be hard to imagine what a difference a shoebox containing a few simple toys and gifts makes to a child, but if you think that, for many, this is the first time they will receive any present at Christmas, it helps people understand. Many are abandoned by their parents or have been removed from abusive situations by the authorities, are ill, or are living in poverty or squalid conditions with their families. The shoeboxes bring happiness to them, not only in the shape of the presents, but as proof that someone is thinking of them and cares about them.

This Christmas please share in the power of a simple gift - reminding a child in need that God loves them and that they have not been forgotten. Please help us to send as many shoeboxes as we can.

If you would like any more information please don't hesitate to contact me via the church office.

Denise Shone

www.operationchristmaschild.org.uk



LIFELINE DEBT ADVICE

***Feel like you're drowning in debt?
Call Lifeline Debt Advice and
let them be your lifeline...***

Has the '*credit crunch*' had an impact on your finances?
Are you struggling to balance the budget each month?
If so, then *Lifeline Debt Advice* can help.

Many people are tempted to ignore the bills and final demands which drop with increasing regularity through the letterbox, hoping that the problem will go away. Unfortunately all too often it doesn't and the situation soon becomes unmanageable.

Lifeline Debt Advice has trained advisers who operate out of the Wesley Centre in Sandbach.

Our aim is to help anyone who has money or debt problems and the service is **totally free** and **confidential**.

If you are in need of help please call us on

01270 750358

to arrange an appointment.



Lifeline
Debt Advice

(If no-one answers leave a message and we will get back to you.)

KID'S KORNER

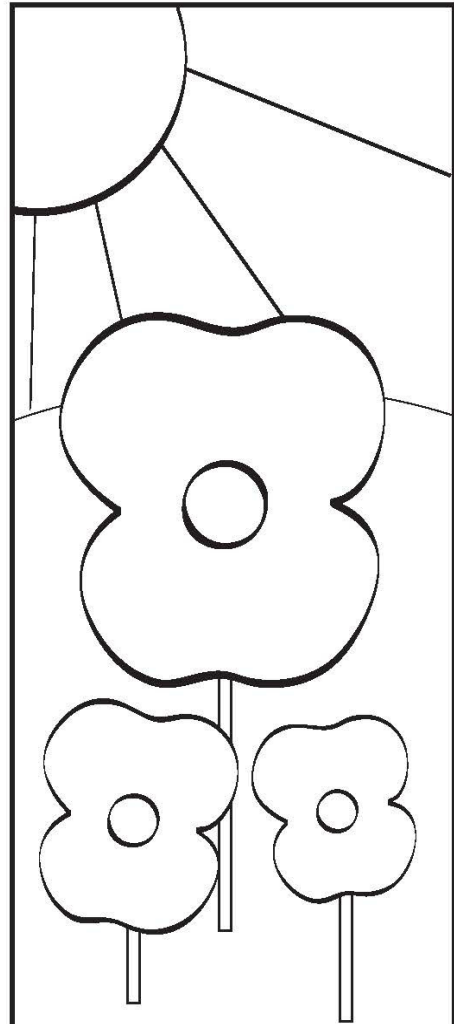
Sometimes we find it hard to remember things, so why not cut out and colour in this poppy bookmark so at least you can remember which page you were reading...

Does it matter...?

Does it matter? Losing your legs?...
For people will always be kind,
And you need not show that you mind
When the others come in after hunting
To gobble their muffins and eggs.

Does it matter? Losing your sight?...
There's such splendid work for the blind,
And people will always be kind
As you sit on the terrace remembering
And turning your face to the light.

Does it matter? Those dreams from the pit?...
You can drink and forget and be glad
And people won't say you're mad.
For they'll know you've fought for your
country
And no one will worry a bit.



*This bookmark
belongs to*



CHRISTMAS SERVICES 2011

Please come along and share in our
Christmas celebrations - you will
be most welcome



Sunday 11th December	10.30am	Junior church nativity service
Sunday 18th December	10.30am	Children's community carol service
	6.30pm	Carol service
Christmas Eve	4.00pm	Crib service
	11.00pm	Christmas communion
Christmas Day	9.00am	Holy communion
	10.30am	All age communion
Sunday 29th January 2012	10.30am	Christingle service

CHURCH HALL APPEAL

As you will likely know, the Church Hall burnt down in February 2010 and we are currently fundraising to be able to build a purpose-built replacement.

Why not keep in contact with St Peter's about fundraising events and how the project is going on Facebook and on Twitter?



On Facebook search for 'St. Peter's Church Hall, Elworth' and join the group.

From Facebook there is even a link to Twitter or go to Twitter direct and search for 'Elworth Hall' or go to <https://www.twitter.com/ElworthHall>.



CONTACT US

Vicar: Revd David Page 01270 762415
vicar@stpeters-elworth.org.uk
Curate: Revd Jon Prior 01270 762555
curate@stpeters-elworth.org.uk



CHURCH OFFICE

Due to the Church Hall fire, the Church Office is now running out of Newark House. If you require any information please contact:



01270 762213
or e-mail: **office@stpeters-elworth.org.uk**
www.stpeters-elworth.org.uk

OPENING TIMES

St Peter's Church is open every **Tuesday** morning between **10.00am** and **11.00am** for prayer and reflection. In addition to the regular Tuesday mornings, it will also be open when events, either local or national, lead to a need for quiet contemplation and prayer.



CHURCHWARDENS
Bill Chapman and Anthony Miller

EDITORIAL DISCLAIMER



Whilst every care has been taken in the compilation of this magazine, we cannot guarantee that inaccuracies will not occur. The Editors are responsible for content selection and reserve the right to amend articles and withhold items as deemed necessary. Articles submitted after the deadline date may not be included in that edition of the magazine and the Editors' decision is final. Should you have any concerns regarding the content in the magazine or wish to submit an article for inclusion, please contact us by e-mail on editor@stpeters-elworth.org.uk or phone the Church Office on 762213.

Bethany Jones and Diane Noble, Editors

St Peter's PCC, Elworth - Registered Charity Number 1130803

SERVICES FOR NOVEMBER

	9.00am St Peter's	10.30am St Peter's	10.30am Ettiley Heath	6.30pm St Peter's
6th	Holy Communion	Morning Worship	All Age Service	Evening Prayer
13th	Holy Communion	Joint Remembrance Service at Elworth Methodist Church starting at 10.00am		Evening Prayer <i>with Act of Remembrance</i>
20th	Morning Prayer	Holy Communion	Special Service	Holy Communion
27th	Holy Communion	Advent Service	All Age Holy Communion	CTS Advent Service

FROM THE REGISTERS

We welcome through baptism:

Lily Ella Rosiak



We join in sadness with the family of the late:

Shirley Nicholls

Albert Wheetman

Sarah Woolley

